

~ NOTES ~

BID ITEM AND UNIT TO BID
SLOPED BOX INLET-OUTLET TYPE 1

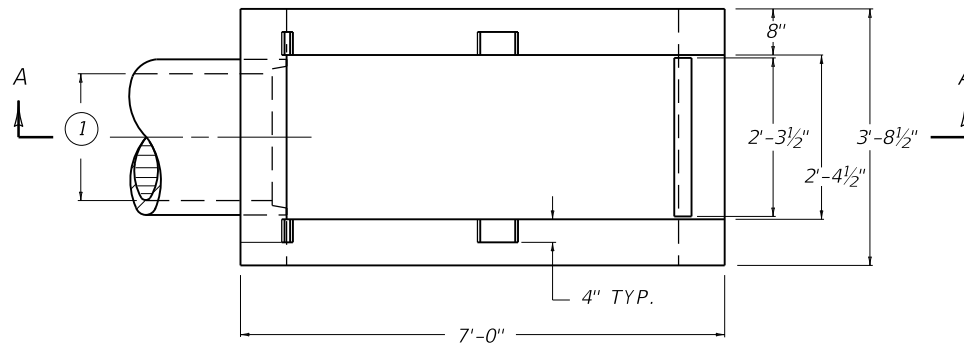
EACH

- ① INTERIOR SPAN
- ② INTERIOR RISE
- 3. THE UNIT PRICE BID FOR EACH STRUCTURE SHALL INCLUDE CONCRETE, STRUCTURAL STEEL GRATINGS, EXCAVATION, LABOR AND ALL INCIDENTALS NECESSARY FOR ITS CONSTRUCTION AS DETAILED ON THIS SHEET.
- 4. SIZE AND LOCATION OF PIPE SHALL BE SHOWN ON PLANS.
- 5. SLOPED BOX INLET OR OUTLET TYPE 1 IS INTENDED TO BE USED WITH THE FOLLOWING PIPE SIZES:

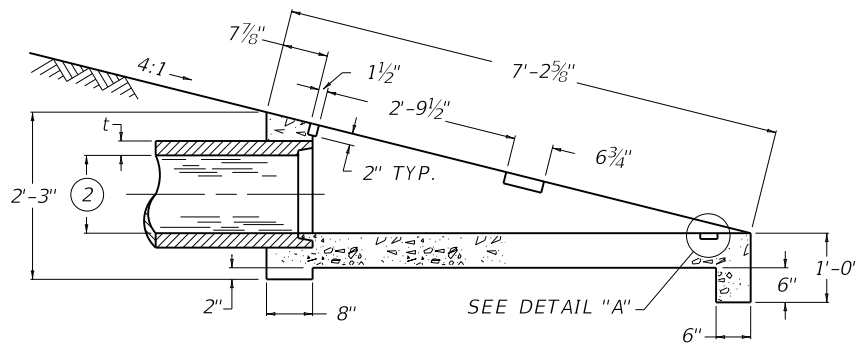
METAL PIPE ARCH - (15" EQUIV. ROUND)

METAL PIPE ARCH - (18" EQUIV. ROUND)

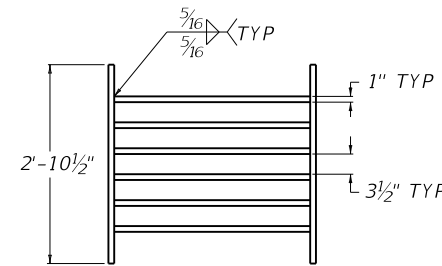
CONCRETE ELLIPTICAL PIPE - (18" EQUIV. ROUND)



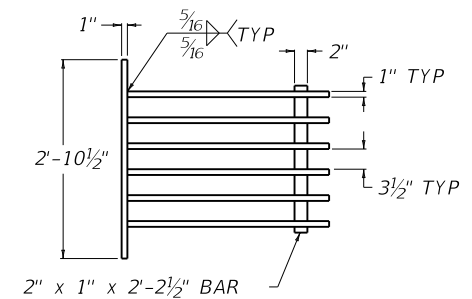
PLAN VIEW



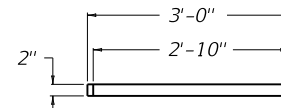
SECTION A-A



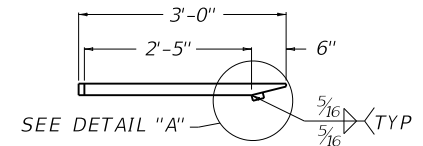
GRATE NO. 1
PLAN VIEW



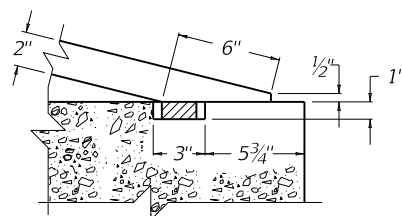
GRATE NO. 2
PLAN VIEW



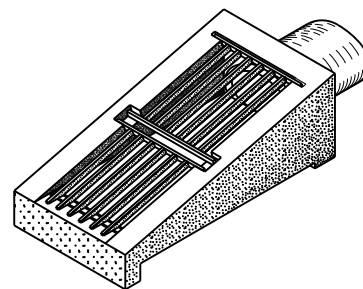
GRATE NO. 1
SIDE ELEVATION



GRATE NO. 2
SIDE ELEVATION



DETAIL "A"



ISOMETRIC VIEW

APPROXIMATE QUANTITIES			
CLASS "A" CONC.	GRATE	LBS STRUCTURAL STEEL	
CU. YDS.	NUMBER	EACH GRATE	TOTAL LBS
0.9	1	155	298
	2	143	

KENTUCKY DEPARTMENT OF HIGHWAYS	
SLOPED BOX INLET OR OUTLET TYPE 1	
STANDARD DRAWING NO. RDB-110-08	
SUBMITTED <i>[Signature]</i>	12-01-15
DESIGNED BY <i>[Signature]</i>	DATE
APPROVED <i>[Signature]</i>	12-01-15
STATE HIGHWAY ENGINEER	DATE